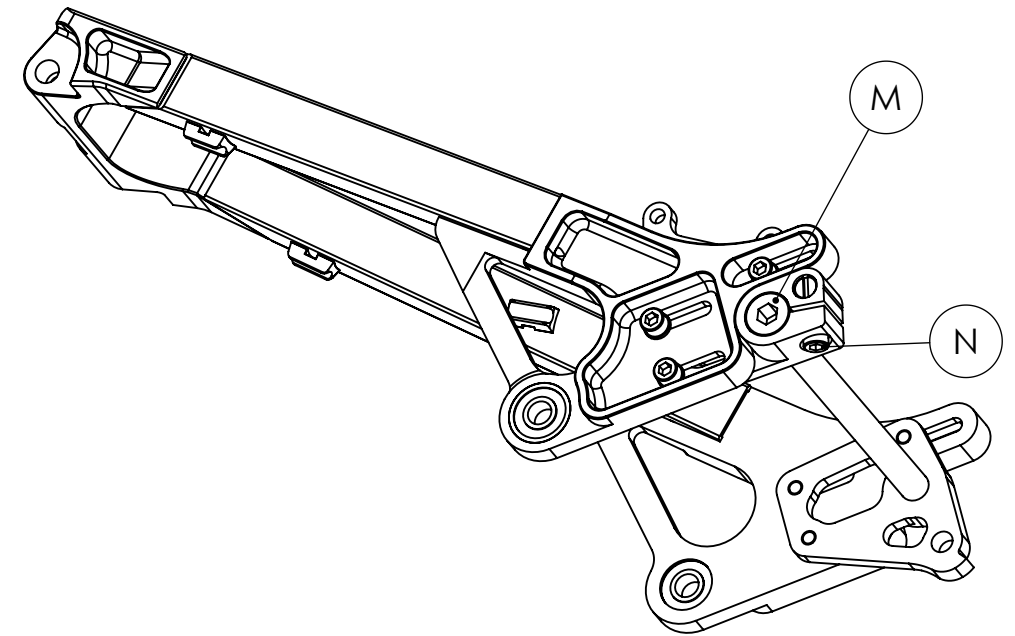
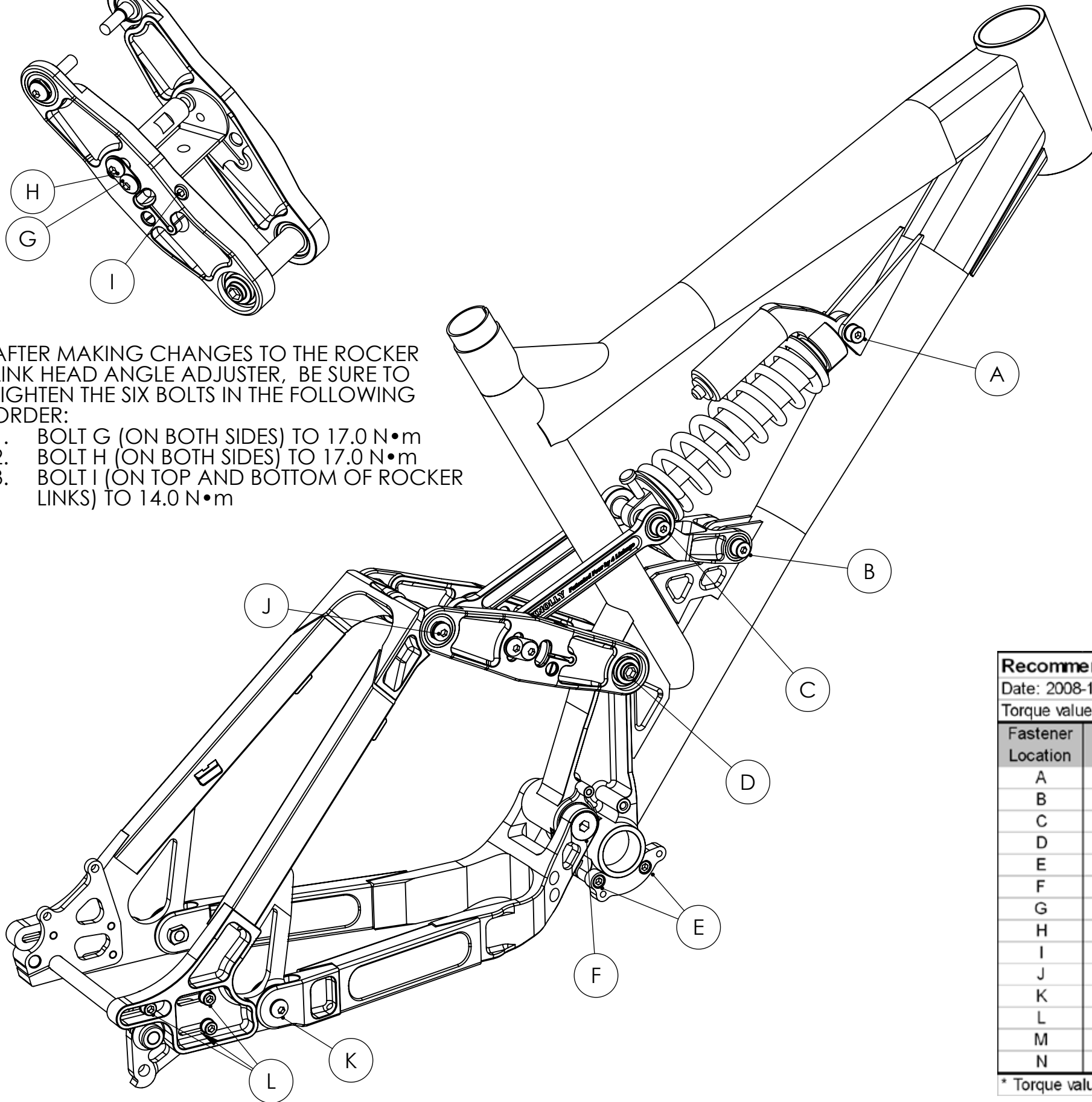


AFTER MAKING CHANGES TO THE ROCKER LINK HEAD ANGLE ADJUSTER, BE SURE TO TIGHTEN THE SIX BOLTS IN THE FOLLOWING ORDER:

1. BOLT G (ON BOTH SIDES) TO 17.0 N•m
2. BOLT H (ON BOTH SIDES) TO 17.0 N•m
3. BOLT I (ON TOP AND BOTTOM OF ROCKER LINKS) TO 14.0 N•m



V-TACH FRAME BOLT TORQUE VALUES

Recommended Bolt Torque Values for Knolly Bikes V-tach Frame				
Date: 2008-10-21				
Torque values assume clean and lubricated parts and fasteners				
Fastener Location	Hex Key Size	Recommended Tightening Torque		Notes
		Metric	Standard	
A	6 mm	20.0 (N•m)	14.8 (ft-lb)	Requires 13 mm Open Ended Wrench
B	6 mm	20.0 (N•m)	14.8 (ft-lb)	Requires 13 mm Open Ended Wrench
C	6 mm	20.0 (N•m)	14.8 (ft-lb)	Requires 13 mm Open Ended Wrench
D	8 mm	34.0 (N•m)	25.1 (ft-lb)	Requires Additional 8 mm Hex Key
E	4 mm	13.0 (N•m)	9.6 (ft-lb)	Apply Loctite 242 To Bolt Threads
F	8 mm	22.0 (N•m)	16.3 (ft-lb)	Requires Additional 8 mm Hex Key
G	5 mm	17.0 (N•m)	12.6 (ft-lb)	Tighten Both G Bolts First Before H Bolts
H	5 mm	17.0 (N•m)	12.6 (ft-lb)	Tighten Both H Bolts First Before I Bolts
I	5 mm	14.0 (N•m)	10.4 (ft-lb)	Left Bolt Head Undemeath Rocker Link
J	5 mm	17.0 (N•m)	12.6 (ft-lb)	
K	5 mm	17.0 (N•m)	12.6 (ft-lb)	Requires 12 mm Open Ended Wrench
L	5 mm	12.5 (N•m)	9.2 (ft-lb)	For All 6 Dropout Bolts
M	8 mm	11.5 (N•m)	8.5 (ft-lb)	
N	5 mm	12.5 (N•m)	9.2 (ft-lb)	

* Torque value in inch-pounds